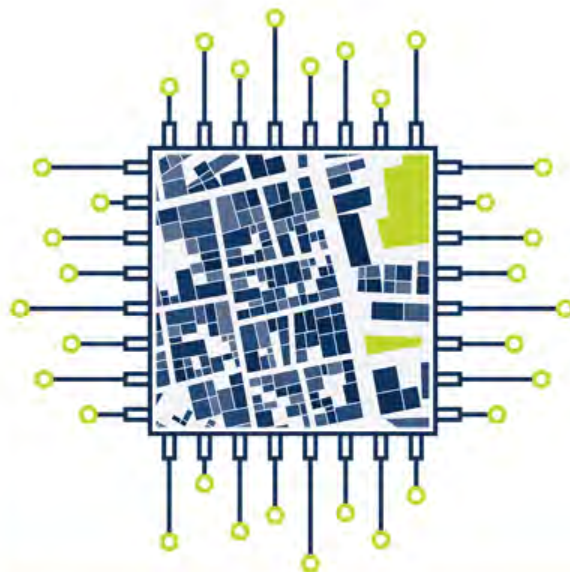


# Using Data and Technology to Catalyze Systems Change in Youth Homelessness Initiatives

Alicia Lehmer, Homebase  
Peter Bell, Wind Youth Services



Solving Problems &  
Impacting Communities  
With Data



# Preventing and Ending Youth Homelessness

- The 2018 Point-in-Time Count found that nationally, about 10% of people experiencing homelessness are unaccompanied youth under the age of 25
- Unprecedented increase in federal and local efforts to prevent and youth homelessness through cross-systems collaboration, including:
  - Youth Homelessness Demonstration Program (YHDP)
  - Youth/Young Adults with Child Welfare Involvement At-Risk of Homelessness grants
  - ***100-Day Challenges to Prevent and End Youth Homelessness***



# 100-Day Challenges: Part of a National Movement



- 4 U.S. Department of Housing and Urban Development (HUD) cohorts
  - Two urban, two rural cohorts
  - 18 communities
- Supported by Homebase, Rapid Results Institute (RRI), and A Way Home America

# How Do 100-Day Challenges Work?

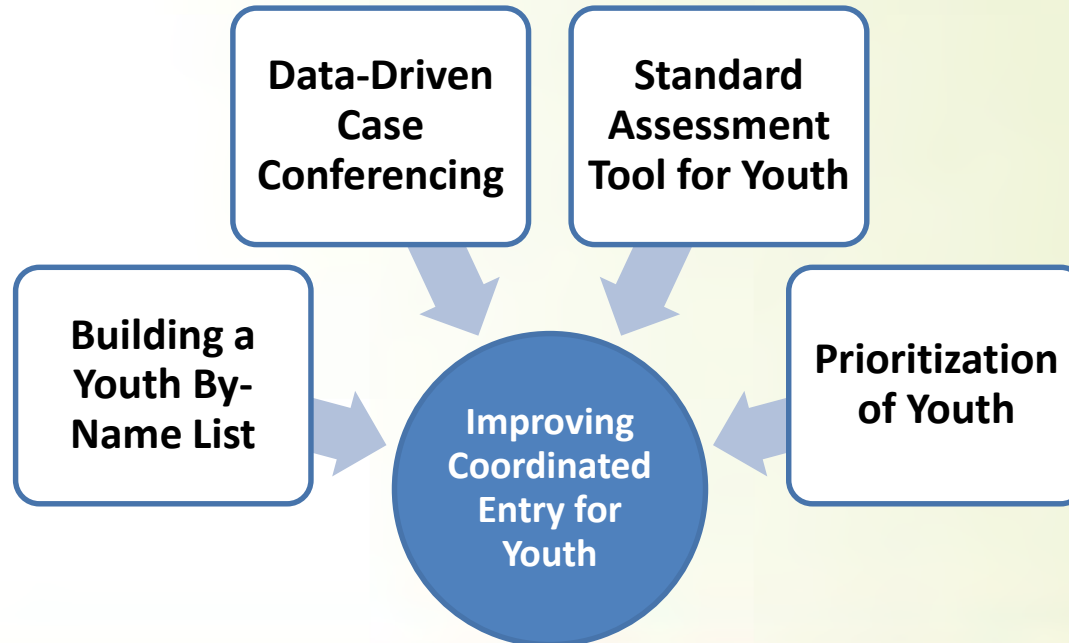




# The Importance of Data-Driven Decision-Making in Preventing and Ending Youth Homelessness

- Understanding local demographics of youth experiencing homelessness: age, race, ethnicity, gender identity, sexual orientation, and more
  - Disparities in representation, access, and outcomes
  - Population-based trends and needs
- Identifying system and program efficiencies and gaps in serving youth
- Improving identification of youth experiencing homelessness across systems and targeting of housing, shelter and services
- Creating understanding around the scale of youth homelessness in your community
- Tracking progress towards community goals and desired outcomes

# Data-Driven Decision-Making: Examples from the HUD 100-Day Challenge Communities







## Data-Driven Decision-Making: Examples from the HUD 100-Day Challenge Communities (continued)

- Operationalizing data collection and use to better serve youth experiencing homelessness
- Creating a standardized way to track and report on all youth being served and the impact of new interventions/systems change
- Shift in mindset from simply collecting data to strategically using it



# Authentic Youth Engagement in Data-Driven Decision-Making Processes

*“Nothing About Us, Without Us”*

- Youth with lived experience can and should be involved in data-driven decision-making processes
- Make information and trainings available to youth partners on HMIS, Coordinated Entry, and other local data processes
- Be intentional in acknowledging the impact for youth with lived experience “seeing themselves” in the data





# Sacramento's 100-Day Challenge on Youth Homelessness

**100 Day Challenge**

**Goal**

"In 100 Days, we will house 200 youth & young adults aged 16-24 in safe, stable housing with connections to supports  
of which:

- ◆ 20% are pregnant and/or parenting
- ◆ 65% are experiencing mental health symptoms as a barrier to housing.

**Youth Housed Total:**

**Day**

1	2	3	4	5	6	7	8	9	10	11	12
13	14	15	16	17	18	19	20	21	22		
23	24	25	26	27	28	29	30	31	32		
33	34	35	36	37	38	39	40	41	42		
43	44	45	46	47	48	49	50	51	52	53	
54	55	56	57	58	59	60	61	62	63		
64	65	66	67	68	69	70	71	72	73	74	
75	76	77	78	79	80	81	82	83	84	85	
86	87	88	89	90	91	92	93	94	95		
96	97	98	99	100							



**Sacramento's Pipeline of Housing and Service Options** features multiple entry points, a single front door to access a range of services, co-located partners, and varied housing and service options to maximize youth choice and best fit.





# Sacramento's System Map

- Looked at our existing pipeline of services prior to the 100-day challenge.
  - Identify the “leaky” parts
  - Did we have team member representation from all relevant stake holders?
  - Were the systems working? E.g. Coordinated Entry, Behavioral Health, Diversion/Prevention, Child Welfare & Juvenile Justice
  - Who was slipping through the cracks?
  - The Youth By-Name list, our thoughts differed from what was happening in practice





## Sac's 100-Day Challenge

- “In 100 days, we will house 200 youth and young adults ages 16-24 in safe and stable housing with connections to supports, of which 20% are pregnant and or parenting youth and young adults and 65% are experiencing stress or mental health symptoms that create challenges to becoming stably housed.”
- System Representation: Youth with lived experience, Homeless Youth Service Providers, Extended Foster Care, Behavioral Health (BH), Sacramento County Office of Education, CoC/HMIS lead agency, Department of Human Assistance **ALL Traditionally Siloed**



# Challenges Faced

- Data collection (use of HMIS vs. self-contained system)
- Data sharing between siloed systems
- Lack of new housing, very few homeless youth service providers accepted youth families
- Lacking community knowledge/existing data on scope of problem (especially youth families) – We hadn't seen a By-Name List
- Youth traditionally struggled to access Behavioral Health housing and supports
- Getting people to use HMIS – some agencies/entities are HMIS/data averse







# What Does Housing Look Like?



**Stably Housed = A stable living arrangement intended to be for 90+ day. Emergency shelters cannot be counted as housed.**



# Youth Engagement

- Address challenges to youth engagement
  - Transportation
  - Compensation
  - Adults talking over youth, or using unfamiliar jargon
  - Mentorship and empowering youth to speak up
- Privacy – youth didn't have access to HMIS



## Key Accomplishments to Come out of the Challenge

- TAY Case Conferencing and a vastly improved Youth By-name List
- Collaboration
  - Authentically with youth
  - Across traditionally siloed systems
- A TAY focused PIT count event, which included a supplemental youth survey which was included in the PIT count data
- Increased investment in HMIS from providers and systems (Behavioral Health, DHA, Schools)
- Media campaigns and national recognition which improved visibility
- Increased transparency for system map, and youth accessing traditionally inaccessible programs

# Will Change Last?

A work in progress –  
progress is harder to  
sustain without the  
backdrop of the  
Challenge

Achieving Status Quo +

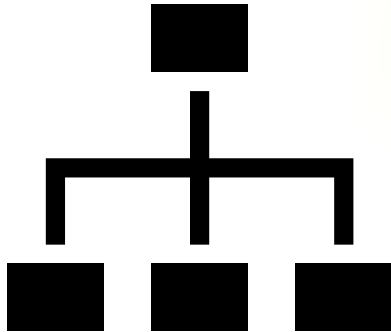
Team burn-out, stalling  
stretch goals

Staff turnover

Progress rolling into  
next challenge – The  
Grand Challenge

# System Map Exercise

---



Developing and utilizing a system map for populations of focus, including youth, in your own community

## Discussion & Questions







# Thank You!

## Contact Us

**Alicia Lehmer**

Policy Analyst

HomeBase

[alicia@homebaseccc.org](mailto:alicia@homebaseccc.org)

**Peter Bell**

Associate Director for Program Sustainability

Wind Youth Services

[peterb@windyouth.org](mailto:peterb@windyouth.org)